



24th CSC CATAMARAN CHAMPIONSHIP
3rd & 4th February 2024
Changi Sailing Club, Singapore
Organizing Authority (OA): Changi Sailing Club

SAILING INSTRUCTIONS

The notation '[DP]' in a rule in the SI means that the penalty for a breach of that rule may, at the discretion of the protest committee, be less than disqualification.

1 RULES

1.1 The regatta will be governed by the rules as defined in:

- Racing Rules of Sailing (RRS)
- Maritime and Port Authority (MPA)
- Class Rules
- International Regulations for Preventing Collisions at Sea
- Notice of Race (NOR) & Sailing Instruction (SI)

1.2 If there is a conflict between languages, the English text will take precedence

1.3 If there is a conflict between the NOR and SI, this SI will take precedence. This changes RRS 63.7.

2 NOTICES TO COMPETITORS

Notices to competitors will be posted on the official notice board located at the Tekong Cove.

3 CHANGES TO THE SAILING INSTRUCTIONS

Any change to the sailing instructions will be posted before 0900 on the day it will take effect, except that any change to the schedule of the races will be posted by 2000hrs on the day before it will take effect.

4 SIGNALS MADE ASHORE

4.1 Signals made ashore will be displayed on the flagstaff located at the CSC jetty.

4.2 When flag AP is displayed ashore before the first warning signal, '1 minute' is replaced with 'not less than 30 minutes' in the race signal AP.


5 SCHEDULE OF RACES

DATE	ACTIVITIES	TIME
Saturday, 3 rd February	Skippers' Briefing	1000hrs
	Racing	1155hrs (First Warning)
Sunday, 4 th February	Racing	1155hrs (First Warning)

A maximum of 6 races are scheduled as specified in the Sailing Instructions.

5.2 To alert boats that a race or sequence of races will begin soon, an orange flag will be displayed with one sound for at least five minutes before a warning signal is displayed.

6 CLASS FLAGS



Class	Flag	
Beach Catamaran	Flag code "R"	

7 RACING AREA

Attachment 1 shows the location of the racing areas.

8 THE COURSES

Attachment 2 shows the Course Diagram.

Course Flags	Windward Leeward Courses [18 February]	Time Limit
Numeral Pennant 1 	Start – M1 – M2 – M1 – Finish	60 minutes
Numeral Pennant 2 	Start – M1 – M2 – M1 - M2 - M1 - Finish	60 minutes

Note: All marks to port unless otherwise stated

9 MARKS

M1 and M2	Yellow Cylindrical Buoy
Start / Finish	Between a staff displaying an orange flag on the race committee boat and Pink Spherical Buoy

10 THE START

- 10.1 Races will be started by using RRS 26 with the warning signal made 5 minutes before the starting signal.
- 10.2 The starting line will be between a staff displaying an orange flag on the race committee boat at the starboard end and a pink spherical buoy at the port end.
- 10.3 Race committee will attempt to start all classes together.
- 10.4 A boat starting later than 4 minutes after her starting signal will be scored Did Not Start without a hearing. This changes RRS A4.

11 THE FINISH

The Finishing line will be between a staff displaying an orange flag on the CSC Jetty and ODM (CSC 1).

12 PENALTY SYSTEM

- 12.1 RRS 44.1 is changed so that the Two-Turns Penalty is replaced by the One-Turn Penalty.

13 TIME LIMITS

- 13.1 The time limit for the first boat to sail the course and finish is **60 minutes**. Failure to abandon will not be grounds for redress. This changes RRS 62.1(a).
- 13.2 Boats failing to finish within **30 minutes** after the first boat sails the course and finishes will be scored Did Not Finish without a hearing. This changes RRS 35, A4 and A5.

14 PROTESTS AND REQUESTS FOR REDRESS

- 14.1 Protest forms are available at the race office located at the Front Desk. Protests and request for redress or reopening shall be delivered there within the appropriate time limit.
- 14.2 For each class, the protest time limit is 90 minutes after the last boat has finished the last race of the day or the race committee signals no more racing to day, whichever is later.
- 14.3 Notices will be posted no later than 30 minutes after the protest time limit to inform competitors of hearings which they are parties or names as witnesses. Hearings will be held in the protest room, located at the 2nd floor in the Ward Room.
- 14.4 Notices of protests by the race committee or protest committee will be posted to inform boats under RRS 61.1(b).
- 14.5 Breaches of instructions 15, 17 and 18 will not be grounds for a protest by a boat. This change RRS 60.1(a). Penalties for these breaches may be less than disqualification if the protest committee so decides.
- 14.6 On the last scheduled day of racing a request for reopening a hearing shall be delivered
 - (a) within the protest time limit if the requesting party was informed of the decision on the previous day;

- (b) no later than 30 minutes after the requesting party was informed of the decision on that day. This changes RRS 66.

14.7 On the last scheduled day of racing a request for redress based on a protest committee decision shall be delivered no later than 30 minutes after the decision was posted. This changes RRS 62.2.

15 SCORING

15.1 The Low Point System of RRS Appendix A will apply.

15.2 The handicapping system will be the Texel ratings.

15.3 A maximum of 6 races are scheduled for this regatta. A minimum of 1 race is required to be completed to constitute a series.

- a) When fewer than 5 races have been completed, a boat's series score will be the total of her race scores.
- b) When 5 or more races have been completed, a boat's series score will be the total of her race scores excluding her worst score.

16 SAFETY REGULATIONS [DP]

16.1 **Sign on and sign off:** Each boat skipper shall personally sign-on on the forms provided at the Race Office prior to launching for the first race each day. After arriving on shore, each boat shall personally sign-off on the forms provided within the protest time limit.

16.2 A boat that retires from a race shall notify the race committee as soon as possible.

17 REPLACEMENTS OF CREW OR EQUIPMENT [DP]

17.1 Substitution of competitors will not be allowed without prior written approval of the race committee.

17.2 Substitution of equipment, other than damaged or lost, will not be allowed. Substitution of damaged or lost equipment will not be allowed unless authorized by the race committee. Requests for substitution shall be made to committee at the first reasonably opportunity.

18 TRASH DISPOSAL [DP]

Boats shall not put trash in the water. Trash may be placed aboard support or official boats.

19 RADIO COMMUNICATION [DP]

Except in an emergency, a boat that is racing shall not make voice or data transmissions and shall not receive voice or data communication that is not available to all boats.

20 PRIZES

Prizes will be given as follows:

Division	Prizes
Open	1 st – 3 rd
F16 One-Design	1 st – 3 rd

- i. When there are 4 or more entries – 3 prizes will be awarded.
- ii. When there are 3 entries – 2 prizes will be awarded.
- iii. When there are 2 entries – 1 prize will be awarded.

21 DISCLAIMERS OF LIABILITY

Competitors participate in the regatta entirely at their own risk. See RRS 3, Decision to Race. The organising authority will not accept any liability for material damage or personal injury or death sustained in conjunction with or prior to, during, or after the regatta.

22 MPA REQUIREMENTS [DP]

22.1 All Participating boats must be registered with Maritime and Port Authority for use in Singapore Waters.

22.2 Standard MPA safety requirements shall apply. In particular, **boats must keep clear of larger vessels making way in restricted channel.**

22.3 Prohibited Areas

a) Chek Jawa Wetlands (1° 24'.7N, 103° 59'.6E)

Entry into the Chek Jawa Wetlands is affected by numerous restrictions and prohibitions. For further details, see Port Marine Notice No 126 of 2007.

b) CAAS 1 (1°23'.55N, 103°59'.94E)

No vessel shall proceed south of the line of CAAS Buoy 1 All vessels are prohibited from entering, transiting, anchoring or mooring within these areas unless specific approval has been obtained from the Port Master.

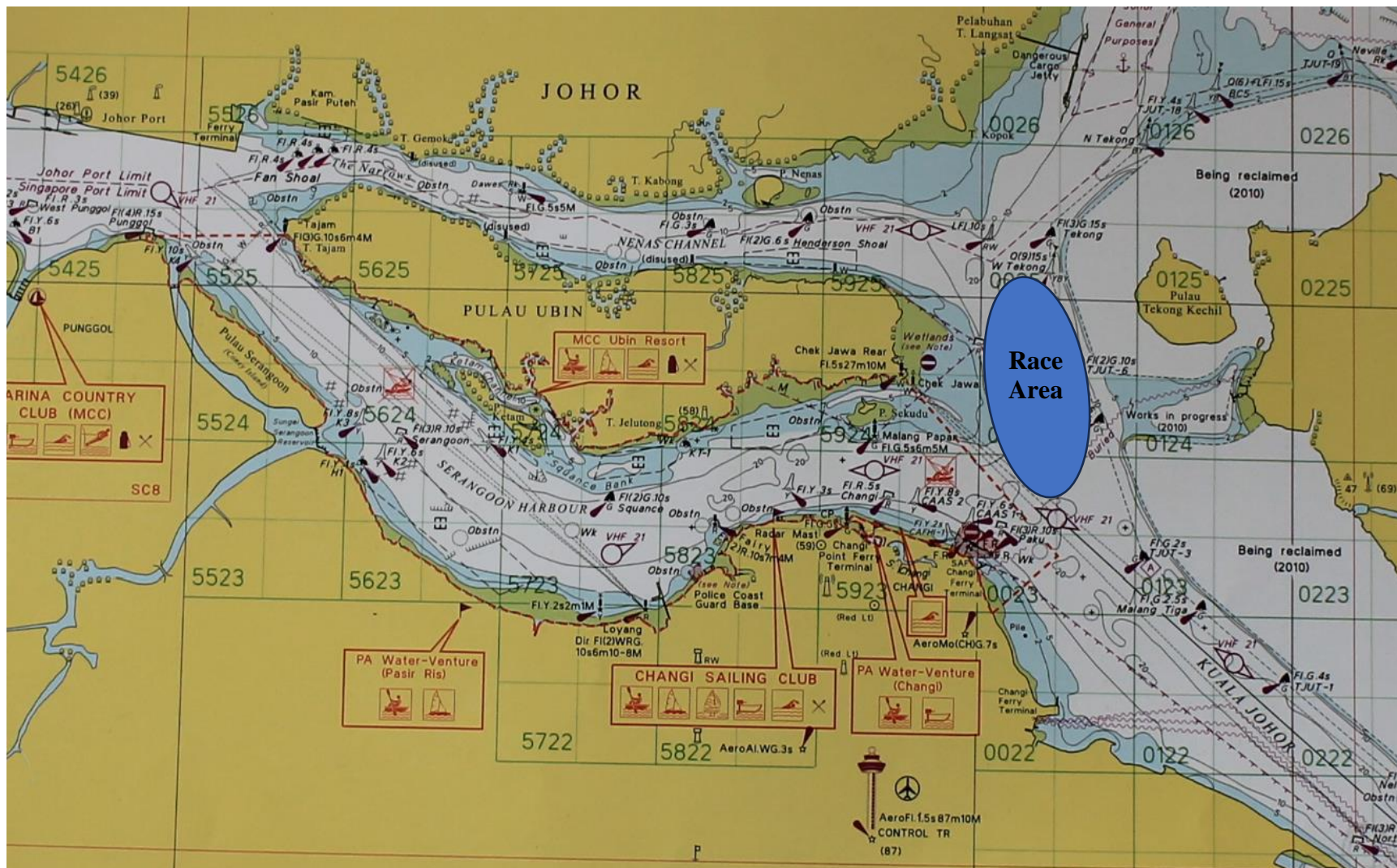
22.4 All participating boats must **stay within Singapore Port Limits at all times.**

22.5 Any infringement of the port regulations may result in the disqualification of the boat(s) involved.

23 INSURANCE

Each participating boat shall be insured with adequate valid third-party liability insurance cover.

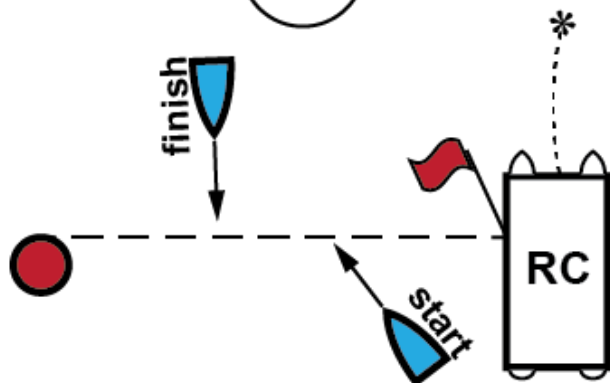
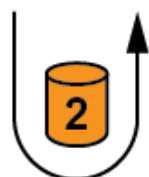
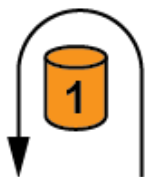
ATTACHMENT 1 – RACE COURSE AREA





24th CSC CATAMARAN CHAMPIONSHIP

www.csc.org.sg

ATTACHMENT 2 – COURSE DIAGRAM



Course Flags	Windward Leeward Courses [18 February]	Time Limit
Numeral Pennant 1 	Start – M1 – M2 – M1 – Finish	60 minutes
Numeral Pennant 2 	Start – M1 – M2 – M1 - M2 - M1 - Finish	60 minutes

Note: All marks to port unless otherwise stated

M1 and M2	Yellow Cylindrical Buoy
Start / Finish	Between a staff displaying an orange flag on the race committee boat and Pink Spherical Buoy