



2022 Lady Helm Race

Changi Sailing Club, Singapore
Organising Authority (OA): Changi Sailing Club

SAILING INSTRUCTIONS

The notation '[DP]' in a rule in the SI means that the penalty for a breach of that rule may, at the discretion of the protest committee, be less than disqualification.

1 RULES

The regatta will be governed by the rules as defined in:

- Racing Rules of Sailing (RRS)
- Maritime and Port Authority of Singapore (MPA)
- IRC Rule 2021/2022
- International Regulations for Preventing Collisions at Sea
- Notice of Race (NOR) & Sailing Instruction (SI)

2 NOTICES TO COMPETITORS

Notices to competitors will be posted on the official notice board located at the Tekong Cove.

3 CHANGES TO THE SAILING INSTRUCTIONS

Any change to the sailing instructions will be posted before 0900 on the day it will take effect, except that any change to the schedule of the races will be posted by 2000hrs on the day before it will take effect.

4 SIGNALS MADE ASHORE

4.1 Signals made ashore will be displayed on the flagstaff located at the CSC jetty.

4.2 When AP flag is displayed ashore before the first warning signal, '1 minute' is replaced with 'not less than 10 minutes' in the race signal AP.

5 SCHEDULE OF RACES

5.1

RACE	DATE	TIME OF 1 st WARNING SIGNAL
Lady Helm Race	12 th March	1355hrs

5.2 To alert boats that a race or sequence of races will begin soon, an orange flag will be displayed with one sound for at least five minutes before a warning signal is displayed.

6 CLASS FLAGS

Keelboats (IRC)	Flag code "E"
Keelboats (CHN)	Flag code "K"
Beach Catamarans	Flag code "R"
Multi-hulls	Flag code "T"

7 **RACING AREA**
Area as defined by the race Courses.

8 **THE COURSES**

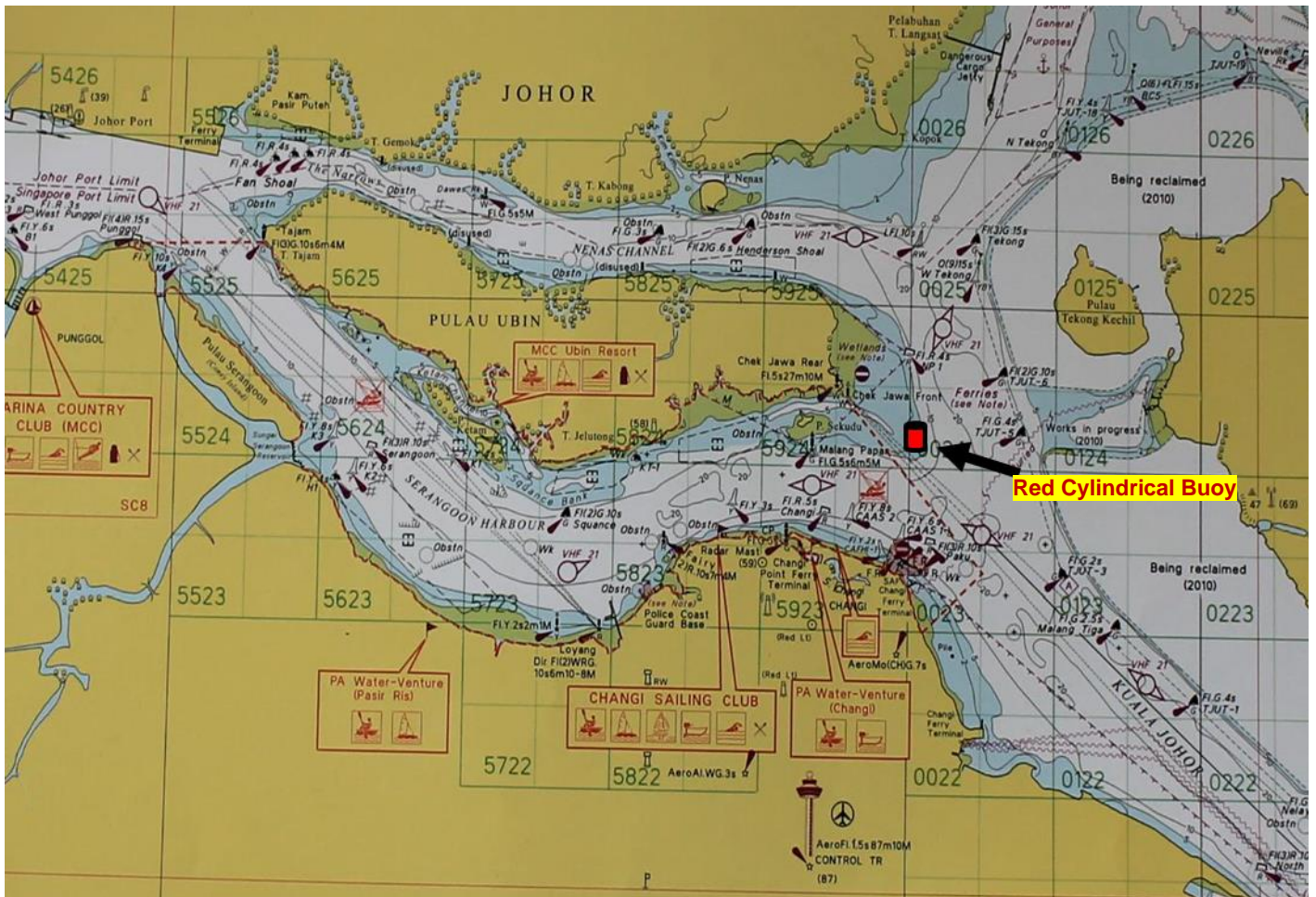
Course Flags	Course	Time Limit
Numeral Pennant 1 	Start (West to East), Changi Buoy, CSC 1 (Starboard), Changi Buoy, CSC 1 (Stbd), Changi Buoy, Finish (East to West)	210 Minutes
Numeral Pennant 2 	Start (E to W), Squance Buoy, CSC 1, Squance Buoy, CSC 1, Squance Buoy, Finish (W to E)	
Numeral Pennant 3 	Start (W to E), Changi Buoy, CSC 1 (Stbd), Squance Buoy, Serangoon Buoy (Stbd), Squance Buoy (Stbd), Finish (W to E)	
Numeral Pennant 4 	Start (W to E), Changi Buoy, CAAS 2, Red Cylindrical Buoy, NP1, Tekong Buoy, NP1 (Stbd), Red Cylindrical Buoy (Stbd), CAAS 2 (Stbd), Changi Buoy (Stbd), CSC 1 (Stbd), Squance Buoy, Finish (W to E)	
Numeral Pennant 5 	Start (E to W), Serangoon Buoy (Stbd), CSC 1, Squance Buoy, Finish (W to E)	
Numeral Pennant 6 RED  	Start (W to E), Changi Buoy, CAAS 2, Red Cylindrical Buoy, NP1, Pulau Ubin, Kelong West of P. Ubin, Serangoon Buoy, Finish (W to E)	
Numeral Pennant 6 GREEN  	Start (E to W), Serangoon Buoy (Stbd), Kelong West of P. Ubin (Stbd), Pulau Ubin (Stbd), NP1 (Stbd), Red Cylindrical Buoy (Stbd), CAAS 2 (Stbd), Changi Buoy (Stbd), Finish (E to W)	
Numeral Pennant 7 	Start (W to E), Changi Buoy, CAAS 2, Red Cylindrical Buoy, NP1, Tekong Buoy, NP1 (Stbd), Paku Buoy, North Angler Buoy, Paku Buoy (Stbd), CAAS 1, CAAS 2, Changi Buoy (Stbd), Finish (E to W)	
Numeral Pennant 8 	Start (W to E), Changi Buoy, CAAS 2 (Stbd), CAAS 1 (Stbd), Paku Buoy, North Angler Buoy, Paku Buoy (Stbd), CAAS 1, CAAS 2, Changi Buoy (Stbd), Finish (E to W)	
Numeral Pennant 9 	Start (W to E), Changi Buoy, CAAS 2, Red Cylindrical Buoy, NP1, Tekong Buoy, NP1 (Stbd), Red Cylindrical Buoy (Stbd), Paku Buoy, Red Cylindrical Buoy, NP1, Tekong Buoy, NP1 (Stbd), Red Cylindrical Buoy (Stbd), CAAS 2 (Stbd), Changi (Stb), Finish (E to W)	

Note: All marks to **port** unless otherwise stated

Note: Start/Finish lines are between the Flag pole on the CSC Jetty & ODM (CSC1)

Note: No boats are to sail between all fish farms located North and South of Pulau Ubin and the Island.

9 THE MARKS OF THE COURSE



Marks	Description / Location
Start / Finish Mark	Flag staff at the end of CSC jetty and ODM (CSC1)
North Angler	Lat: 1° 21.594'N Long: 104° 2.405'E
CAAS 1	Lat: 1° 23.555'N Long: 103° 59.934'E
CAAS 2	Lat: 1° 23.679'N Long: 103° 59.589'E
Changi Buoy	Lat: 1° 23.726'N Long: 103° 59.427'E
Tekong Buoy	Lat: 1° 25.418'N Long: 104° 0.438'E

Marks	Description / Location
NP1	Lat: 1° 24.718'N Long: 103° 59.981'E
Paku Buoy	Lat: 1° 23.546'N Long: 104° 0.147'E
Pulau Ubin	Lat: 1° 24.777'N Long: 103° 57.659'E
Serangoon Buoy	Lat: 1° 24.078'N Long: 103° 56.356'E
Squance Buoy	Lat: 1° 23.675'N Long: 103° 57.676'E
Red Cylindrical Buoy	South of NP1, end of Chek Jawa Sand Bar

10 THE START

- 10.1 Races will be started by using RRS 26 with the warning signal made 5 minutes before the starting signal.
- 10.2 The starting line will be between a staff displaying an orange flag on the CSC Jetty and CSC ODM (CSC 1).
- 10.3 The Race committee will attempt to start all classes in the following order:
 - a) Beach Catamarans / Multihulls
 - b) IRC / PY Keelboats
- 10.4 A boat starting later than 10 minutes after her starting signal will be scored Did Not Start.

11 THE FINISH

The Finishing line will be between a staff displaying an orange flag on the CSC Jetty and ODM (CSC 1).

12 PENALTY SYSTEM

RRS 44.1 is changed so that the Two-turns Penalty is replaced by the One-Turn Penalty. This applies to all classes.

13 TIME LIMITS

- 13.1 SI item no. 8 describes the time limits for each race course. Failure to abandon will not be grounds for redress. This changes RRS 62.1(a).
- 13.2 Boats finishing after the limit will be scored Did Not Finish without a hearing. This changes RRS 35, A4 and A5.

14 PROTESTS AND REQUESTS FOR REDRESS

- 14.1 Protest forms are available at the race office located at the Front Desk. Protests and request for redress or reopening shall be delivered there within the appropriate time limit.
- 14.2 For each class, the protest time limit is 60 minutes after the last boat has finished the last race of the day or the race committee signals no more racing today, whichever is later.
- 14.3 Notices will be posted no later than 30 minutes after the protest time limit to inform competitors of hearings which they are parties or names as witnesses. Hearings will be held in the Ward Room, located at the 2nd floor of Changi Sailing Club.
- 14.4 Notices of protests by the race committee or protest committee will be posted to inform boats under RRS 61.1(b).
- 14.5 Breaches of instructions 13, 14, 17, 18, 19, 20, 22 & 23 will not be grounds for a protest by a boat. This change RRS 60.1(a). Penalties for these breaches may be less than disqualification if the protest committee so decides.
- 14.6 Any request for redress based on a protest committee decision shall be delivered no later than 30 minutes after the decision was posted. This changes RRS 62.2.

15 SHORTENING OF COURSE

Courses may be shortened at any mark of the course in accordance with RRS 32.

16 SCORING

- 16.1 A maximum of 1 race is scheduled.

16.2 The PY/CHN numbers for each boat will be adjusted after each race. Adjustment will be as follows:

- First place – drop 1 point
- Second place – drop 0.5 point
- Second last place – add 0.5 point
- Last place – add 1 point

The above applies to the Keelboat Club Racer (PY) only.

17 SAFETY REGULATIONS

17.1 Sign on and Sign off: Each boat skipper shall personally sign-on on the forms provided at the Race Office prior to departing for the race. After arriving on shore, each boat shall personally sign-off on the forms provided within the protest time limit. [DP]

17.2 A boat that retires from a race shall notify the race committee as soon as possible. [DP]

18 MPA REQUIREMENTS

18.1 All Participating boats must be registered with Maritime and Port Authority for use in Singapore Waters. Foreign-registered boats must obtain a valid cruising permit. [DP]

18.2 Standard MPA safety requirements shall apply. In particular, **boats must keep clear of larger vessels making way in restricted channel.** [DP]

18.3 Prohibited Areas

a) Chek Jawa Wetlands (1° 24'.7N, 103° 59'.6E)

Entry into the Chek Jawa Wetlands is affected by numerous restrictions and prohibitions. For further details, see Port Marine Notice No 126 of 2007.

b) CAAS 1 (1°23'.55N, 103°59'.94E)

No vessel shall proceed south of the line of CAAS Buoy 1 All vessels are prohibited from entering, transiting, anchoring or mooring within these areas unless specific approval has been obtained from the Port Master.

18.4 Any infringement of the port regulations may result in the disqualification of the boat(s) involved.

18.5 All participating boats may only have a maximum of 5 persons onboard. This supersedes all applicable class rules.

18.6 All participants must wear masks unless engaged in strenuous activity.

18.7 All participants must ensure safe distancing whenever practicable.

19 MEASUREMENT & COMPLIANCE (IRC)

19.1 All boats sailing under the IRC Rule must display their Black Bands on the mast and boom and make available their sail wardrobe for measurement before race commencement. [DP]

19.2 The Rating Authority or a boat's Rule Authority may require a boat to be submitted for measurement at any time without giving reasons. Measurement will be undertaken by authorised measurers of IRC South East Asia. A new certificate will be issued by the Rating Authority based on the new measurement data.

19.3 It is at the discretion of the Organising Authority to appoint a qualified IRC measurer for random boat inspections.

20 TRASH DISPOSAL

Boats shall not put trash in the water. Trash shall be disposed off after coming ashore. [DP]

21 IDENTIFICATION

All boats must carry a distinguishing number or letter on the mainsail. [DP]

22 RADIO COMMUNICATION

22.1 Except in an emergency, a boat that is racing shall not make voice or data transmissions and shall not receive voice or data communication that is not available to all boats. [DP]

22.2 Race Committee will broadcast radio communication over **VHF Channel 77** for any information and updates. Boats are advised to maintain a listening watch on the channel.

23 PRIZES

Prizes will be given as follows:

Division	Prizes
IRC Keelboat	1 st – 3 rd
Keelboat Club Racer	1 st – 3 rd
Beach Catamaran	1 st – 3 rd
Multihull	1 st – 3 rd

- i. When there are 4 or more entries – 3 prizes will be awarded
- ii. When there are 3 entries – 2 prizes will be awarded
- iii. When there are 2 entries – 1 prize will be awarded

24 DISCLAIMER OF LIABILITY

Competitors participate in the regatta entirely at their own risk. See RRS 3, Decision to Race. The organising authority will not accept any liability for material damage or personal injury or death sustained in conjunction with or prior to, during, or after the regatta.

25 INSURANCE

Each participating boat shall have valid and adequate insurance to cover this event.