



INVISIRON AMBASSADORS' CUP

4th November 2023

Changi Sailing Club, Singapore

Organizing Authority (OA): Changi Sailing Club

SAILING INSTRUCTIONS

The notation '[DP]' in a rule in the SI means that the penalty for a breach of that rule may, at the discretion of the protest committee, be less than disqualification.

1 RULES

- 1.1 The regatta will be governed by the rules as defined in the:
- Racing Rules of Sailing (RRS)
 - Maritime and Port Authority (MPA)
 - International Regulations for Preventing Collisions at Sea
 - Notice of Race (NOR) & Sailing Instruction (SI)
 - (SI) Sailing Instructions
- (If there is any conflict between NOR & SI, this SI will take precedence)

2 NOTICES TO COMPETITORS

Notices to competitors will be posted on the official notice board located at the Tekong Cove, Changi Sailing Club.

3 CHANGES TO THE SAILING INSTRUCTIONS

Any change to the sailing instructions will be posted before 0900 on the day it will take effect, except that any change to the schedule of the races will be posted by 2000hrs on the day before it will take effect.

4 SIGNALS MADE ASHORE

- 4.1 Signals made ashore will be displayed on the flagstaff located at the CSC jetty.
- 4.2 When flag AP flag is displayed ashore before the first warning signal, '1 minute' is replaced with 'not less than 10 minutes' in the race signal AP.

5 SCHEDULE OF RACES

5.1

Date	Warning Signal	Starting Signal	Division	Race
4 th November	1255hrs	1300hrs	Ambassador's Division (white sails only*)	All Pennants
	1305hrs	1310hrs	Non-Ambassador's Division (white sails only*)	All Pennants
	1305hrs	1310hrs	Cruising Catamarans	All Pennants
	1315hrs	1320hrs	Trimarans	All Pennants
	1315hrs	1320hrs	Beach Catamaran / Weta	All Pennants

Invisiron Ambassadors' Cup 2023






www.csc.org.sg

***Main Sail & Jib/Genoa only. No other sails (eg: Code Zero / Spinnaker) are allowed. Classic rigs with multiple mainsails/head sails must declare sail plan upon registration for approval from Race Committee.**

- 5.2 To alert boats that a race or sequence of races will begin soon, an orange flag will be displayed with one sound for at least '5 minutes' before a warning signal is displayed.
- 5.3 A boat can only qualify for the Ambassadors division when she has an Ambassador on board.

6 CLASS FLAGS

Class flags will be:

Class	Flag	
Ambassadors' Division	Flag E	
Non-Ambassadors' Division	Flag K	
Cruising Catamaran	Flag W	
Trimaran	Flag T	
Beach Catamaran / Weta	Flag R	

7 RACING AREA

Attachment 1 shows the location of the racing areas.

8 THE COURSES

Attachment 1 shows the Race Courses.

9 MARKS

Attachment 2 shows the location of the race courses.

10 THE START

- 10.1 Races will be started by using rule 26 with the warning signal made 5 minutes before the starting signal.
- 10.2 The starting line for the Non-Ambassadors, Cruising Catamaran, Trimaran, Beach Catamaran and Weta Divisions will be between a staff displaying an orange flag on the CSC Jetty and CSC 1 (Club Line).
- 10.3 The starting line for the **Ambassadors Division** will be the transit taken between a staff displaying an orange flag on the CSC Jetty and CSC 1. An unanchored Safety Perimeter Boat displaying an orange flag will be situated between Pulau Ubin and CSC 1 to ensure boats starting do not sail beyond the Safety Perimeter Boat and into the shipping channel.
- 10.4 A boat starting later than 15 minutes after her starting signal will be scored Did Not Start without a hearing. This changes RRS Appendix A.

11 THE FINISH

The Finishing line will be between a staff displaying an orange flag on the CSC Jetty and CSC 1 (Club Line).

12 TIME LIMITS

Boats finishing after the limit will be given the position as they cross the finish line. However, it will not be better than those who finish within the time limit.

13 SHORTENING OF COURSE

- 13.1 Courses may be shortened at any mark of the course in accordance with RRS 32.
- 13.2 The race may also be shortened at any point of the course by a committee boat displaying flag 'S' over a green or red flag. 'S' over green means the finish line is a north/south transit taken from the committee boat. 'S' over red means the finish line is an east/west transit taken from the committee boat. Boats may finish on either side of the committee boat.

14 PROTESTS AND REQUESTS FOR REDRESS

- 14.1 Protest forms are available at the race office located at the Front Desk. Protests and request for redress or reopening shall be delivered there within the appropriate time limit.
- 14.2 For each class, the protest time limit is 30 minutes after the last boat has finished the race.
- 14.3 Notices will be posted no later than 30 minutes after the protest time limit to inform competitors of hearings in which they are parties or named as witnesses. Hearings will be held in the Ward Room, located at the 2nd floor.
- 14.4 Notices of protests by the race committee or protest committee will be posted to inform boats under RRS 61.1(b).
- 14.5 Breaches of instructions 16, 17 and 18 will not be grounds for a protest by a boat. This changes RRS 60.1(a). Penalties for these breaches may be less than disqualification if the protest committee so decides.

15 SCORING

- 15.1 1 race is scheduled for this event.**
- 15.2 RRS Appendix A will apply.
- 15.3 The handicapping system will be the Texel ratings for the Beach Catamaran Class.
- 15.4 The Weta Class will sail one-design.
- 15.5 The handicapping system will be the Changi Handicap Numbers (PY) for the Ambassadors, Non-Ambassadors, Cruising Catamaran and Trimaran Divisions.

16 PENALTY SYSTEM

For all classes, RRS 44.1 is changed so that the Two-Turns Penalty is replaced by the One-Turn Penalty.

17 SAFETY REGULATIONS

- 17.1 **Sign on and Sign off:** Each boat shall sign-on on the forms provided at the Race Office prior to launching. After arriving on shore, each boat shall sign-off on the forms provided within the protest time limit. [DP]
- 17.2 A boat that retires from a race shall notify the race committee as soon as possible. [DP]
- 17.3 All Participating boats must be registered with Maritime and Port Authority for use in Singapore Waters. [DP]
- 17.4 Standard MPA safety requirements will apply. In particular, **boats must keep clear of larger vessels making way in restricted channel.** [DP]

17.5 Prohibited Areas

- a) Chek Jawa Wetlands (1° 24'.7N, 103° 59'.6E)
Entry into the Chek Jawa Wetlands is affected by numerous restrictions and prohibitions. For further details, see Port Marine Notice No 126 of 2007.
- b) CAAS 1 (1°23'.55N, 103°59'.94E)
No vessel shall proceed south of the line of CAAS Buoy 1 All vessels are prohibited from entering, transiting, anchoring or mooring within these areas unless specific approval has been obtained from the Port Master.

17.6 Any infringement of the port regulations may result in the disqualification of the boat(s) involved.

18 RADIO COMMUNICATION

Except in an emergency, a boat that is racing shall not make voice or data transmissions and shall not receive voice or data communication that is not available to all boats. Race Committee will transmit over VHF Channel 77 the countdown of each start. [DP]

19 PRIZES

Prizes will be given as follows:

Division	Prizes
Ambassadors Division (Line Honours)	1 st
Ambassadors Division	1 st – 3 rd
Non Ambassadors Division	1 st – 3 rd
Cruising Catamaran	TBC
Trimaran	1 st – 3 rd
Weta	TBC
Beach Catamaran	1 st





20 DISCLAIMER OF LIABILITY

Competitors participate in the regatta entirely at their own risk. See RRS 3, Decision to Race. The organising authority will not accept any liability for material damage or personal injury or death sustained in conjunction with or prior to, during, or after the regatta.

21 INSURANCE

Each participating boat shall be insured with adequate valid third-party liability insurance cover. [DP]

ATTACHMENT 1 – RACE COURSE

Course Flags	Race Course	Time Limits
Numeral Pennant No.1 	Start (West to East), Changi Buoy (Port), CSC 1 (Starboard), Squance Buoy (Port) CSC 1 (Port), Changi Buoy (Port), CSC 1 (Starboard), Squance Buoy (Port), Finish (West to East).	180mins.
Numeral Pennant No.2 	Start (East to West), Squance Buoy (Port), CSC 1 (Port), Changi Buoy (Port), CSC 1 (Starboard), Squance Buoy (Port), CSC 1 (Port), Changi Buoy (Port), Finish (East to West)	180mins.
Numeral Pennant No.3 	Start (West to East), Changi Buoy (Port), CAAS 2 (Starboard), CAAS 1 (Starboard), Paku (Port), North Angler (Port), Paku (Starboard), CAAS 1 (Port), CAAS 2 (Port), Changi (Starboard), CSC 1 (Starboard), Squance (Port), Finish (West to East)	180mins.
Numeral Pennant No.4 	Start (West to East), Changi Buoy (Port), CAAS 2 (Port), Changi Buoy (Starboard), CSC 1 (Starboard), Red Buoy located near Fairy Beacon (Starboard), CSC 1 (Port), Changi Buoy (Port), CAAS 2 (Port), Changi Buoy (Starboard), CSC 1 (Starboard), Red Buoy located near Fairy Beacon (Starboard), Finish (West to East)	180mins.

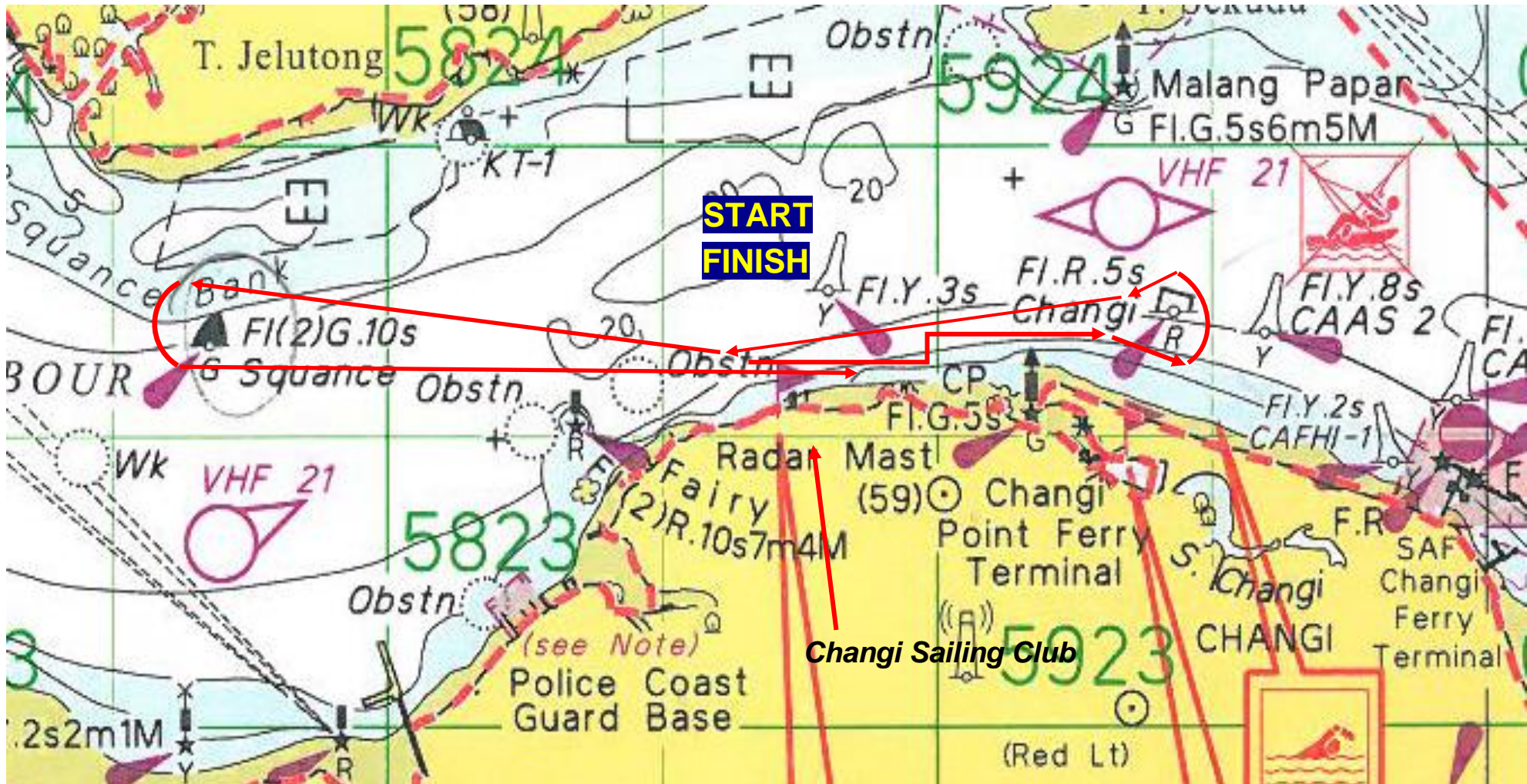
Note: Start/Finish line is between the Flag pole on the CSC Jetty & Yellow Mark (CSC1)

THE MARKS OF THE COURSE

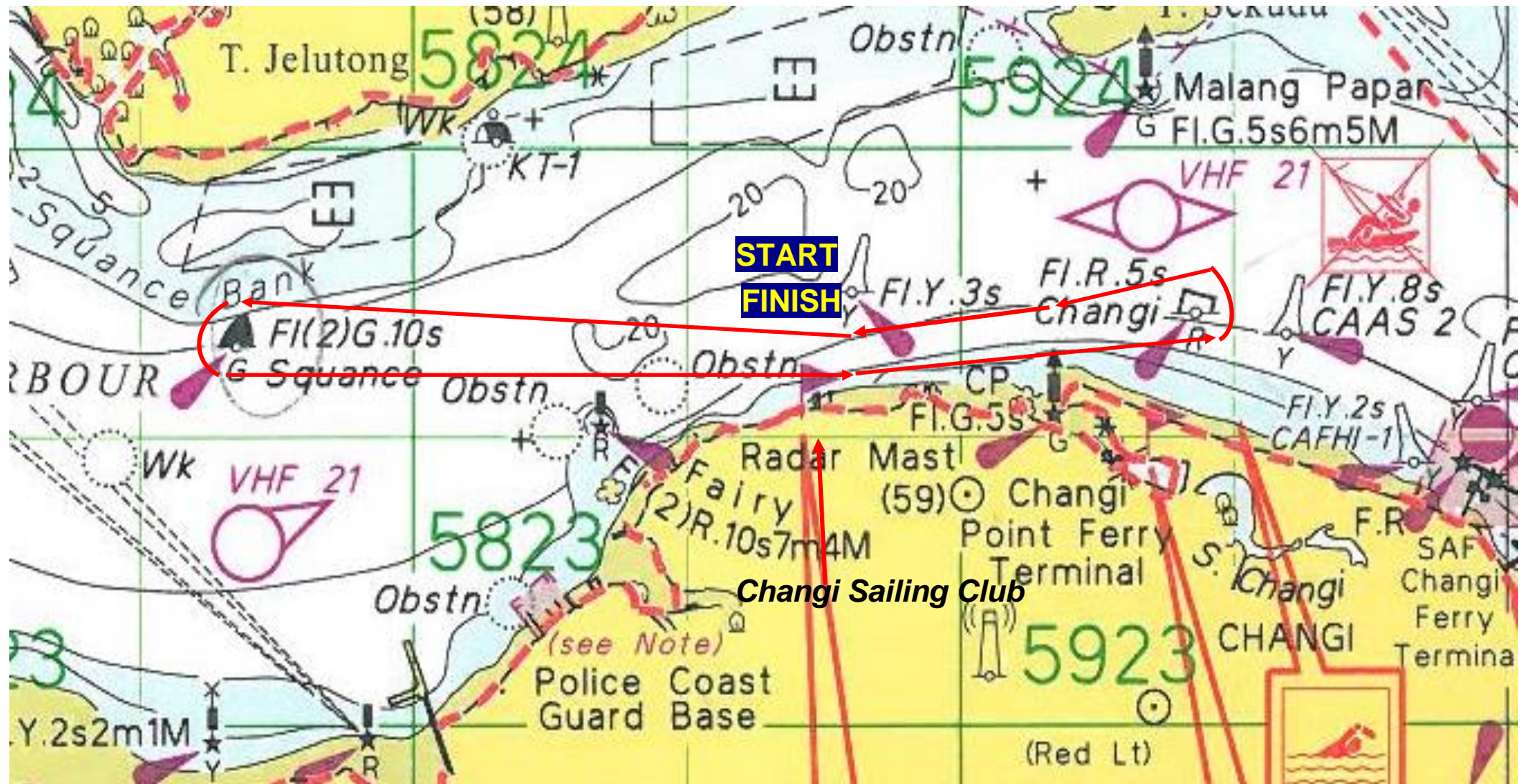
Changi Buoy Lat: 1° 23.726'N Long 103° 59.427'E	CAAS 2 Lat: 1° 23.679'N Long: 103° 59.589'E
Serangoon Buoy Lat: 1° 24.078'N Long: 103° 56.356'E	Squance Buoy Lat: 1° 23.675'N Long: 103° 57.676'E
NP1 Lat: 1° 24.722'N Long: 104° 00.000'E	Fairy Beacon Lat: 01° 23.52'N Long: 103° 58.34'E
North Angler Lat: 1° 21.594'N Long: 104° 2.405'E	

ATTACHMENT 2 – RACE COURSE DIAGRAMS

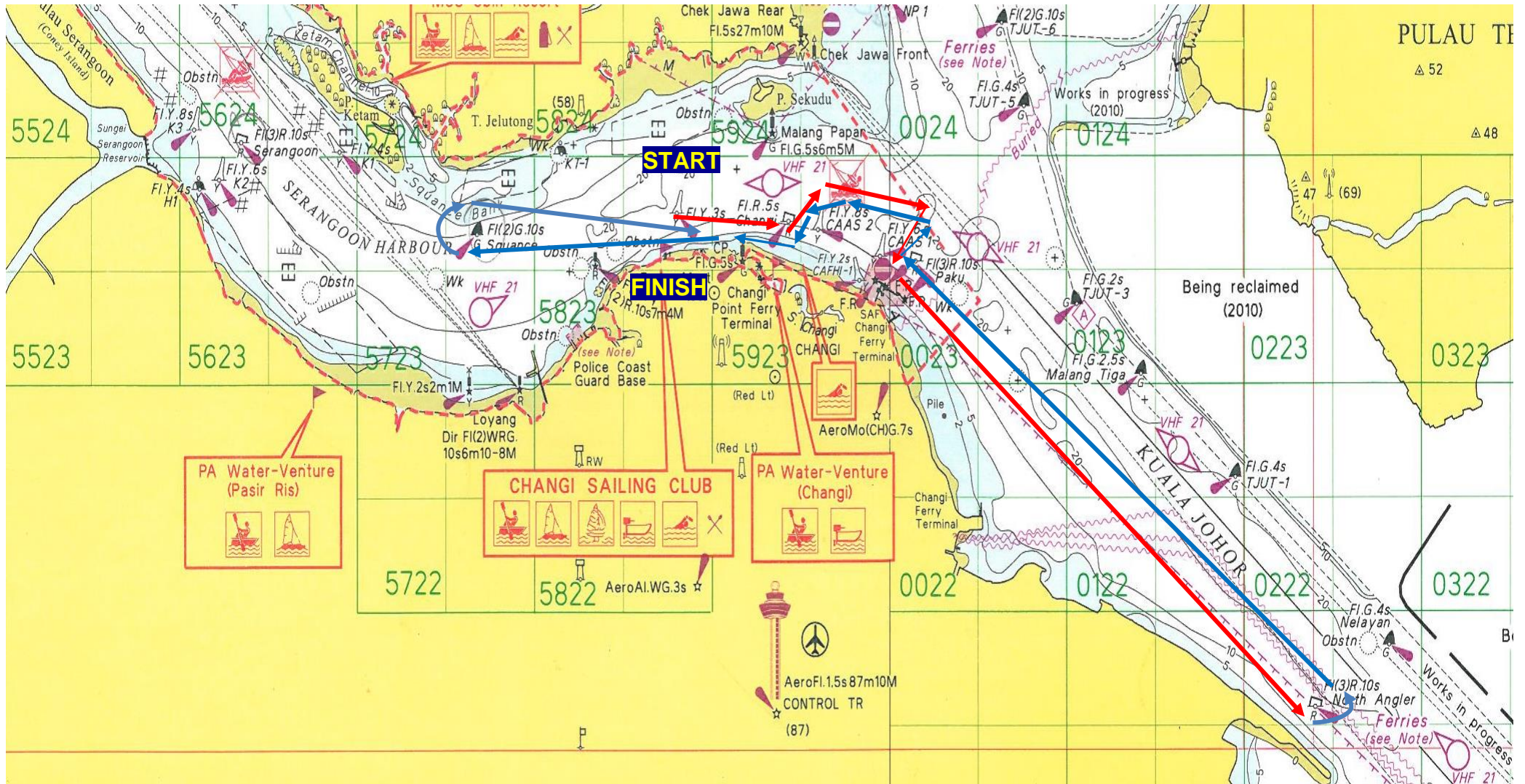
NUMERAL PENNANT NO.1 (2 laps)



NUMERAL PENNANT NO.2 (2 laps)



NUMERAL PENNANT NO.3



Invisiron Ambassadors' Cup 2023

www.csc.org.sg

NUMERAL PENNANT NO.4 (2 laps)

