



## Keelboat IRC, PY & One-Design Championships

28<sup>th</sup> & 29<sup>th</sup> May 2022

Changi Sailing Club, Singapore

Organizing Authority: Changi Sailing Club

### SAILING INSTRUCTIONS

*The notation '[DP]' in a rule in the SI means that the penalty for a breach of that rule may, at the discretion of the protest committee, be less than disqualification.*

#### 1 RULES

- 1.1 The regatta will be governed by the rules as defined in the:
- Racing Rules of Sailing (RRS)
  - Maritime and Port Authority (MPA)
  - International Regulations for Preventing Collisions at Sea
  - Notice of Race (NOR) & Sailing Instruction (SI)
- 1.2 If there is a conflict between languages the English text will take precedence.
- 1.3 If there is a conflict between the NoR & SI, the SI will take precedence. This changes RRS 63.7.

#### 2 NOTICES TO COMPETITORS

Notices to competitors will be posted on the official notice board located at the Tekong Cove.

#### 3 CHANGES TO THE SAILING INSTRUCTIONS

Any change to the sailing instructions will be posted before 0900 on the day it will take effect, except that any change to the schedule of the races will be posted by 2000hrs on the day before it will take effect.

#### 4 SIGNALS MADE ASHORE

- 4.1 Signals made ashore will be displayed on the flagstaff located at the CSC jetty.
- 4.2 When AP flag is displayed ashore before the first warning signal, '1 minute' is replaced with 'not less than 45 minutes' in the race signal AP.

#### 5 SCHEDULE OF RACES




- 5.1 A maximum of 6 races are scheduled.

DATE	ACTIVITIES	TIME
Saturday, 28 <sup>th</sup> May	Skipper's Briefing	1000hrs
	1 <sup>st</sup> , 2 <sup>nd</sup> & 3 <sup>rd</sup> Race	1155hrs (First Warning)
Sunday, 29 <sup>th</sup> May	4 <sup>th</sup> , 5 <sup>th</sup> & 6 <sup>th</sup> Race	1155hrs (First Warning)
	Prize award presentation	1 hour after the conclusion of the last race.

- 5.2 To alert boats that a race or sequence of races will begin soon, an orange flag will be displayed with one sound for at least 5 minutes before a warning signal is displayed.

5.3 On the last day of racing, no Warning Signal will be made after 1600hrs.

## 6 CLASS FLAG

Class	Flag	
IRC / PY Class	Flag E	
J24 Class	Flag K	
Platu Class	Flag R	

## 7 RACING AREA

Attachment 1 shows the location of the racing areas.

## 8 THE COURSES

The diagram in Attachment 2 show the courses, including the approximate angles between legs, the order in which marks are to be passed, and the side on which each mark is to be left.

## 9 MARKS

- 9.1 Mark 1 will be a yellow cylindrical mark.  
Mark 2 will be a red cylindrical mark.  
Start and Finish pin-end mark will be a pink spherical mark.

## 10 THE START

- 10.1 Races will be started by using rule 26 with the warning signal made 5 minutes before the starting signal.
- 10.2 The starting line will be between a staff displaying an orange flag on the Committee boat and the Start Pin-end mark.
- 10.3 A boat starting later than 4 minutes after her starting signal will be scored Did Not Start without a hearing. This changes RRS A4.

## 11 THE FINISH

The finishing line will be between a staff displaying an orange flag on the Committee boat and Finish Pin-end mark.

## 12 TIME LIMITS

- 12.1 If no boat has passed Mark 1 within 20 minutes of her start, the race will be abandoned. Failure to abandon will not be grounds for redress. This changes RRS 62.1 (a).
- 12.2 The time limit for the first boat to sail the course and finish is 60 minutes. Failure to abandon will not be grounds for redress. This changes RRS 62.1(a).
- 12.3 Boats failing to finish within 20 minutes after the first boat sails the course and finishes will be scored Did Not Finish without a hearing. This changes RRS 35, A4 and A5.

## 13 SHORTENING OF COURSE

Courses may be shortened at any mark of the course in accordance with RRS 32.

## 14 PROTESTS AND REQUESTS FOR REDRESS

- 14.1 Protest forms are available at the race office located at the Front Desk. Protests and request for redress or reopening shall be delivered there within the appropriate time limit.
- 14.2 For each class, the protest time limit is 90 minutes after the last boat has finished the last race of the day or the race committee signals no more racing for the day, whichever is later.
- 14.3 Notices will be posted no later than 30 minutes after the protest time limit to inform competitors of hearings which they are parties or names as witnesses. Protest Hearings will be held in the Ward Room, located at the 2<sup>nd</sup> floor of Changi Sailing Club,
- 14.4 Notices of protests by the race committee or protest committee will be posted to inform boats under RRS 61.1(b).
- 14.5 Breaches of instructions 15, 16, 17 and 18 will not be grounds for a protest by a boat. This change RRS 60.1(a). Penalties for these breaches may be less than disqualification if the protest committee so decides.
- 14.6 On the last scheduled day of racing a request for reopening a hearing shall be delivered
- (a) within the protest time limit if the requesting party was informed of the decision on the previous day;
  - (b) no later than 30 minutes after the requesting party was informed of the decision on that day.

This changes RRS 66.

## 15 SCORING

- 15.1 1 race is required to be completed to constitute a series.
- 15.2 A maximum of 6 races are scheduled for this Regatta;
- a) When 4 or fewer races have been completed, a boat's series score will be the total of her race scores.
  - b) When 5 races or more have been completed, a boat's series score will be the total of her race scores excluding her worst score.
- 15.3 RRS Appendix A3 shall apply.

## 16 SAFETY REGULATIONS

- 16.1 **Sign on and Sign off:** Each boat skipper shall personally sign-on on the forms provided at the Race Office prior to launching for the first race each day. After arriving on shore, each boat shall personally sign-off on the forms provided within the protest time limit.
- 16.2 A boat that retires from a race shall notify the race committee as soon as possible. [DP]
- 16.3 All Participating boats must be registered with Maritime and Port Authority for use in Singapore Waters. AIS Transponder must be operational at all times. [DP]
- 16.4 Standard MPA safety requirements shall apply. In particular, **boats must keep clear of larger vessels making way in restricted channel.** [DP]
- 16.5 Prohibited Areas
- a) Chek Jawa Wetlands (1° 24'.7N, 103° 59'.6E)  
Entry into the Chek Jawa Wetlands is affected by numerous restrictions and prohibitions. For further details, see Port Marine Notice No 126 of 2007.
  - b) CAAS 1 (1°23'.55N, 103°59'.94E)

No vessel shall proceed south of the line of CAAS Buoy 1 All vessels are prohibited from entering, transiting, anchoring or mooring within these areas unless specific approval has been obtained from the Port Master.

**17 REPLACEMENT OF CREW OR EQUIPMENT**

- 17.1 Substitution of competitors will not be allowed without prior written approval of the race committee. [DP]
- 17.2 Substitution of equipment, other than damaged or lost, will not be allowed. Substitution of damaged or lost equipment will not be allowed unless authorized by the race committee. Requests for substitution shall be made to committee at the first reasonably opportunity.

**18 TRASH DISPOSAL**

Boats shall not put trash in the water. Trash may be placed aboard support or official boats. [DP]

**19 RADIO COMMUNICATION**

Except in an emergency, a boat that is racing shall not make voice or data transmissions and shall not receive voice or data communication that is not available to all boats. This restriction also applies to mobile telephones. [DP]

**20 PRIZES**

- J24: 1<sup>st</sup> – 3<sup>rd</sup>
- Platu: 1<sup>st</sup> – 3<sup>rd</sup>
- IRC: 1<sup>st</sup> – 2<sup>nd</sup>

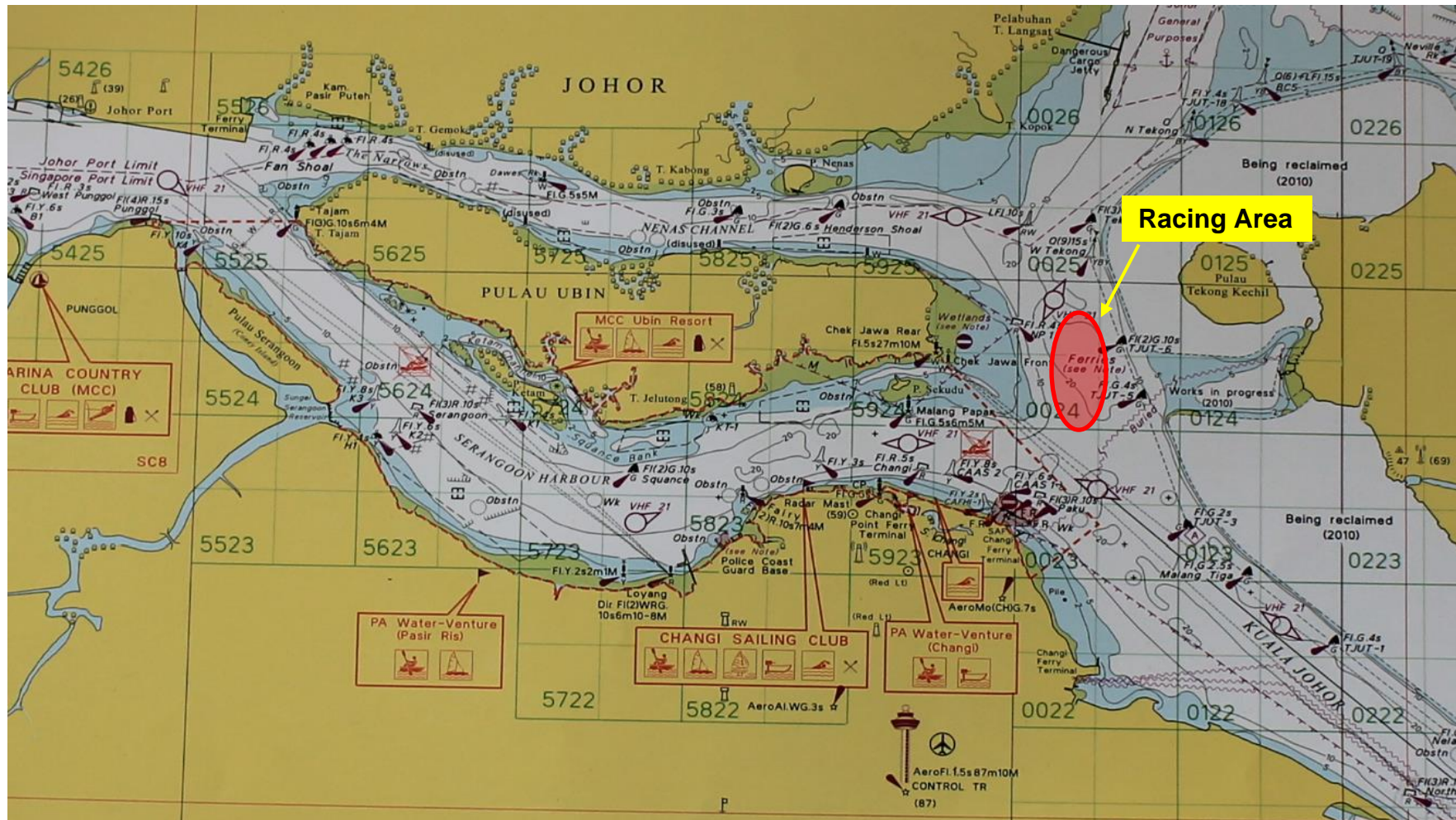
**21 DISCLAIMER OF LIABILITY**

Competitors participate in the regatta entirely at their own risk. See RRS 3, Decision to Race. The organising authority will not accept any liability for material damage or personal injury or death sustained in conjunction with or prior to, during, or after the regatta.

**22 INSURANCE**

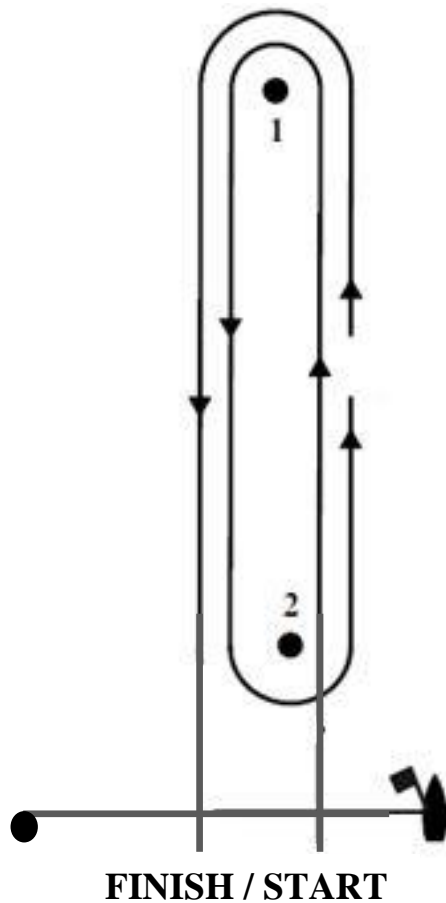
Each participating boat shall be insured with adequate valid third-party liability insurance cover.




# ATTACHMENT 1 – RACE COURSE AREA



**ATTACHMENT 2 – COURSE DIAGRAM**

**WINDWARD / LEEWARD COURSE**



Course Flags	Course	Time Limit (First boat)
<b>Numeral Pennant 1</b> 	Start – 1 – Finish	60mins
<b>Numeral Pennant 2</b> 	Start – 1 – 2 – 1 – Finish	
<b>Numeral Pennant 3</b> 	Start – 1 – 2 – 1 – 2 – 1 – Finish	