



CSC TRIMARAN CHAMPIONSHIP

25 – 26 February 2023

Changi Sailing Club, Singapore

Organizing Authority (OA): Changi Sailing Club

SAILING INSTRUCTIONS

The notation '[DP]' in a rule in the NoR means that the penalty for a breach of that rule may, at the discretion of the protest committee, be less than the disqualification.

1 RULES

- 1.1 The regatta will be governed by the rules as defined in:
- Racing Rules of Sailing (RRS)
 - Maritime and Port Authority (MPA)
 - Class Rules
 - International Regulations for Preventing Collisions at Sea

- 1.2 If there is a conflict between the NOR and SI, the SI will take precedence. This changes RRS Rule 63.7.

2 NOTICES TO COMPETITORS

Notices to competitors will be posted on the official notice board located at the Tekong Cove.

3 CHANGES TO THE SAILING INSTRUCTIONS

Any change to the sailing instructions will be posted before 0900 on the day it will take effect, except that any change to the schedule of the races will be posted by 2000hrs on the day before it will take effect.

4 SIGNALS MADE ASHORE

- 4.1 Signals made ashore will be displayed on the flagstaff located at the CSC jetty.
- 4.2 When flag AP is displayed ashore before the first warning signal, '1 minute' is replaced with 'not less than 10 minutes' in the race signal AP.

5 SCHEDULE OF RACES

- 5.1 A maximum of 6 races are scheduled for the Trimaran Class.
- 5.2 To alert boats that a race or sequence of races will begin soon, an orange flag will be displayed with one sound signal made at least five (5) minutes before a warning signal is displayed. Failure to hear sound signal will have no grounds for redress or protest.

DATE	ACTIVITIES	TIME
Saturday 25 th February	Racing	1055hrs (First Warning)
Sunday, 26 th February	Racing	1055hrs (First Warning)

6 CLASS FLAGS

Class	Flag
Trimaran Class	Flag code "T"
Weta Class	Flag code "W"

7 RACING AREA

Attachment 1 and Attachment 2 shows the location of the racing areas.

8 THE COURSES

8.1 The courses to be sailed shall be as follows:

Course Flags	Course
Numeral Pennant 1 	Start (West to East), Changi Buoy, CAAS 2, NP1, Tekong Buoy, NP1 (Stbd), CAAS 2 (Stbd), Changi Buoy (Stbd), Finish (East to West)
Numeral Pennant 2 	Start (West to East), Changi Buoy, CAAS 2, NP1, Tekong Buoy, NP1, Tekong Buoy, NP1 (Stbd), CAAS 2 (Stbd), Changi Buoy (Stbd), Finish (East to West)
Numeral Pennant 3 	Start (West to East), Changi Buoy, CSC 1 (Stbd), Squance Buoy, Serangoon Buoy (Stbd), Squance Buoy (Stbd), Finish (West to East)
Numeral Pennant 4 	Start (East to West), Squance Buoy, Serangoon Buoy (Stbd), Squance Buoy (Stbd), Serangoon Buoy (Stbd), Finish (West to East)
Numeral Pennant 5 	Start (West to East), Changi Buoy, CAAS 2, NP1, CAAS 2 (Stbd), Changi Buoy (Stbd), Finish (East to West)
Numeral Pennant 6 	Start (West to East), Changi Buoy, CAAS 2, NP1, CAAS 2, NP1, CAAS 2 (Stbd), Changi Buoy (Stbd), Finish (East to West)
Numeral Pennant 7 	Start (West to East), Changi Buoy, CSC 1 (Stbd), Changi Buoy, CSC 1 (Stbd), Changi Buoy, Finish (East to West)
Numeral Pennant 8 	Start (East to West), Squance Buoy, CSC 1, Squance Buoy, CSC 1, Squance Buoy, Finish (West to East)

Note: All marks to port unless otherwise stated. Start/Finish lines are between the Flag pole on the CSC Jetty & Yellow Mark (CSC1)

8.2 No boats are to sail between all fish farms located North and South of Pulau Ubin and the Island.

9 MARKS

Marks are described in Attachment 1.

10 THE START

10.1 Races will be started by using RRS 26 with the warning signal made 5 minutes before the starting signal.

10.2 The starting line will be between a staff displaying an orange flag on the CSC Jetty and CSC ODM (CSC 1).

10.3 A boat starting later than 10 minutes after her starting signal will be scored Did Not Start without a hearing. This changes RRS A4.

11 THE FINISH

The Finishing line will be between a staff displaying an orange flag on the CSC Jetty and ODM (CSC 1).

12 PENALTY SYSTEM

RRS 44.1 is changed so that the Two-Turns Penalty is replaced by the One-Turn Penalty.

13 TIME LIMITS

The time limit to sail and finish the courses in SI 8.1 is **90 minutes**. Failure to abandon will not be grounds for redress. This changes RRS 62.1(a).

14 PROTESTS AND REQUESTS FOR REDRESS

14.1 Protest forms are available at the race office located at the Front Desk. Protests and request for redress or reopening shall be delivered there within the appropriate time limit.

14.2 For each class, the protest time limit is 60 minutes after the last boat has finished the last race of the day or the race committee signals no more racing the day, whichever is later.

14.3 Notices will be posted no later than 30 minutes after the protest time limit to inform competitors of hearings which they are parties or named as witnesses. Hearings will be held in the Ward Room, located at the 2nd floor of Changi Sailing Club

14.4 Notices of protests by the race committee or protest committee will be posted to inform boats under RRS 61.1(b).

14.5 Breaches of instructions 16, 17, 18 and 19 will not be grounds for a protest by a boat. This changes RRS 60.1(a). Penalties for these breaches may be less than disqualification if the protest committee so decides.

14.6 On the last scheduled day of racing a request for reopening a hearing shall be delivered

(a) within the protest time limit if the requesting party was informed of the decision on the previous day;

(b) no later than 30 minutes after the requesting party was informed of the decision on that day. This changes RRS 66.

14.7 On the last scheduled day of racing a request for redress based on a protest committee decision shall be delivered no later than 30 minutes after the decision was posted. This changes RRS 62.2.

15 SCORING

15.1 1 race is required to be completed to constitute a series.

15.2 Fixed Changi Handicap Numbers will apply for the Trimaran Class.

15.3 Weta Class shall sail as a one-design category.

15.4 The Low Point Scoring System applies to all classes.

15.5 A maximum of 6 Races are scheduled for this Regatta;

a) When 4 or fewer races have been completed, a boat's series score will be the total of her race scores.

b) When 5 or more races have been completed, a boat's series score will be the total of her race scores excluding her worst score.

16 SAFETY REGULATIONS

- 16.1 **Sign on and Sign off:** Each boat skipper shall personally sign-on on the forms provided at the Race Office prior to launching for the first race each day. After arriving on shore, each boat shall personally sign-off on the forms provided within the protest time limit. [DP]
- 16.2 A boat that retires from a race shall notify the race committee as soon as possible. [DP]

17 MPA REQUIREMENTS

- 17.1 All Participating boats must be registered with Maritime and Port Authority for use in Singapore Waters.
- 17.2 Standard MPA safety requirements shall apply. In particular, **boats must keep clear of larger vessels making way in restricted channel.** [DP]
- 17.3 Prohibited Areas
- a) Chek Jawa Wetlands (1° 24'.7N, 103° 59'.6E)
Entry into the Chek Jawa Wetlands is affected by numerous restrictions and prohibitions. For further details, see Port Marine Notice No 126 of 2007.
 - b) CAAS 1 (1°23'.55N, 103°59'.94E)
No vessel shall proceed south of the line of CAAS 1 Buoy. All vessels are prohibited from entering, transiting, anchoring or mooring within these areas unless specific approval has been obtained from the Port Master.
 - c) Changi Naval Base (1°18'.3N, 104°01'.8E)
No vessels of any description shall use the said prohibited area for anchorage, passage or other purposes.
- 17.4 Any infringement of the port regulations may result in the disqualification of the boat(s) involved.

18 REPLACEMENT OF CREW OR EQUIPMENT

- 18.1 Substitution of equipment, other than damaged or lost, will not be allowed. Substitution of damaged or lost equipment will not be allowed unless authorized by the race committee. Requests for substitution shall be made to committee at the first reasonably opportunity. [DP]

19 TRASH DISPOSAL

Boats shall not put trash in the water. [DP]

20 RADIO COMMUNICATION

Except in an emergency, a boat that is racing shall not make voice or data transmissions and shall not receive voice or data communication that is not available to all boats. [DP]

21 PRIZES

Prizes will be awarded to the top 3 places in each class.

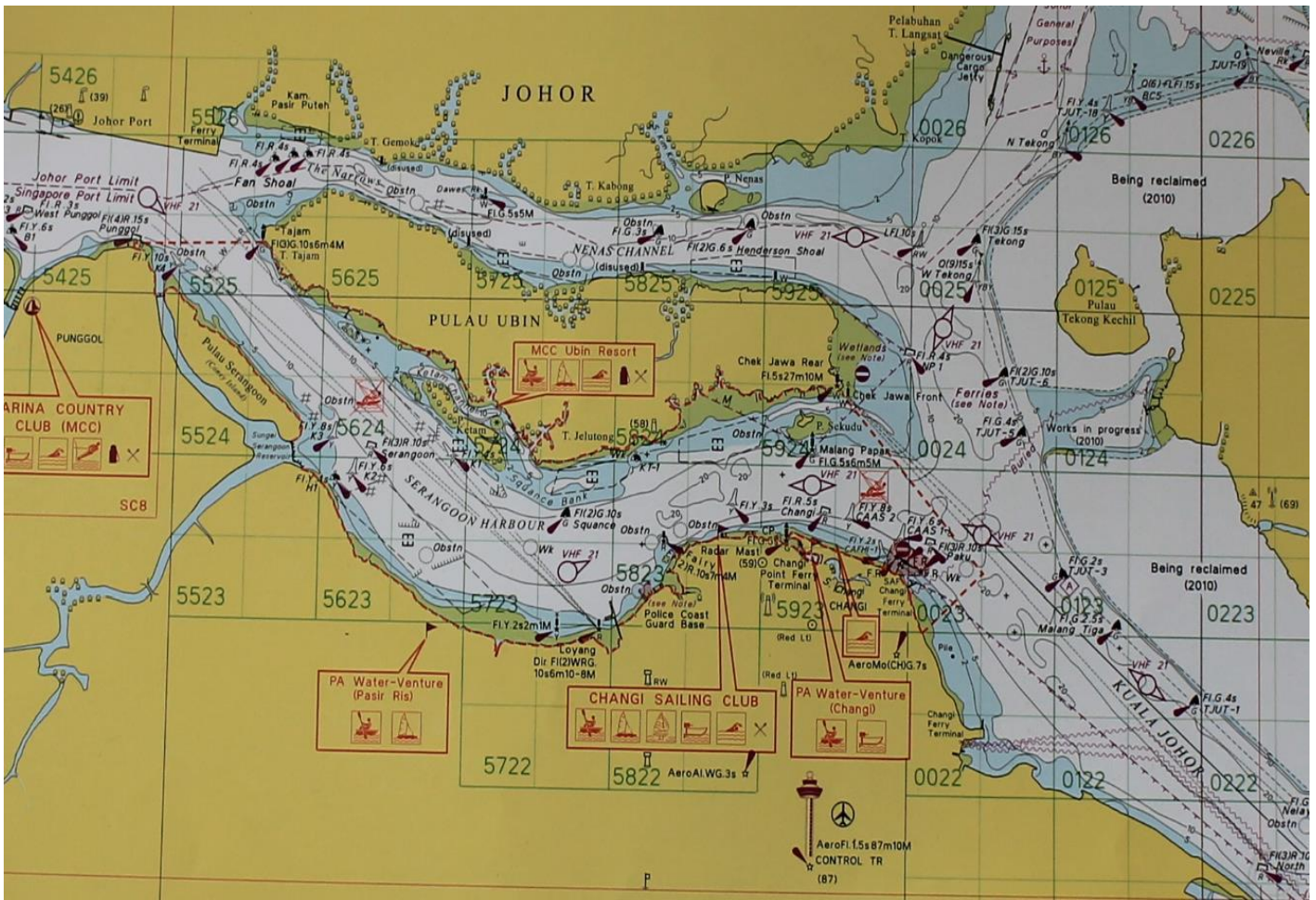
22 DISCLAIMER OF LIABILITY

Competitors participate in the regatta entirely at their own risk. See RRS 3, Decision to Race. The organising authority will not accept any liability for material damage or personal injury or death sustained in conjunction with or prior to, during, or after the regatta.

23 INSURANCE

Each participating boat shall have valid and adequate insurance to cover this event.

ATTACHMENT 1 – RACE COURSE AREA



Marks	Description / Location
Start / Finish Mark	Flag staff at the end of CSC jetty and ODM (CSC1)
Paku	Lat: 1° 23.546'N Long: 104° 0.147'E
Changi Buoy	Lat: 1° 23.726'N Long: 103° 59.427'E
CAAS 2	Lat: 1° 23.679'N Long: 103° 59.589'E
CAAS 1	Lat: 1° 23.555'N Long: 103° 59.934'E

Marks	Description / Location
Serangoon Ferry Buoy	Lat: 1° 24.078'N Long: 103° 56.356'E
Tekong Buoy	Lat: 1° 25.418'N Long: 104° 0.438'E
Squance Buoy	Lat: 1° 23.8'N Long: 103° 57.5'E
NP1	Lat: 1° 24.718'N Long: 103° 59.981'E